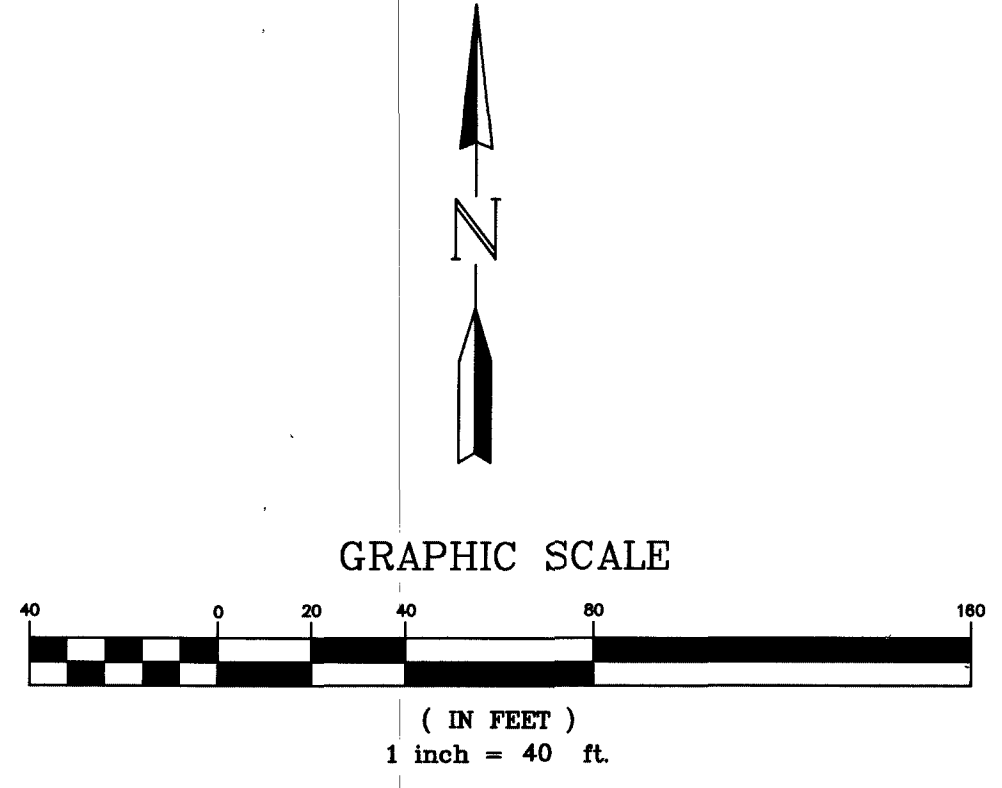


HORIZON BAPTIST CHURCH PLAT

BEING TRACTS 450, 492 AND 493 OF
THE UNRECORDED PLAT OF ROYAL PALM BEACH COLONY INC.
LYING IN SECTION 27, TOWNSHIP 42 SOUTH, RANGE 41 EAST,
PALM BEACH COUNTY, FLORIDA

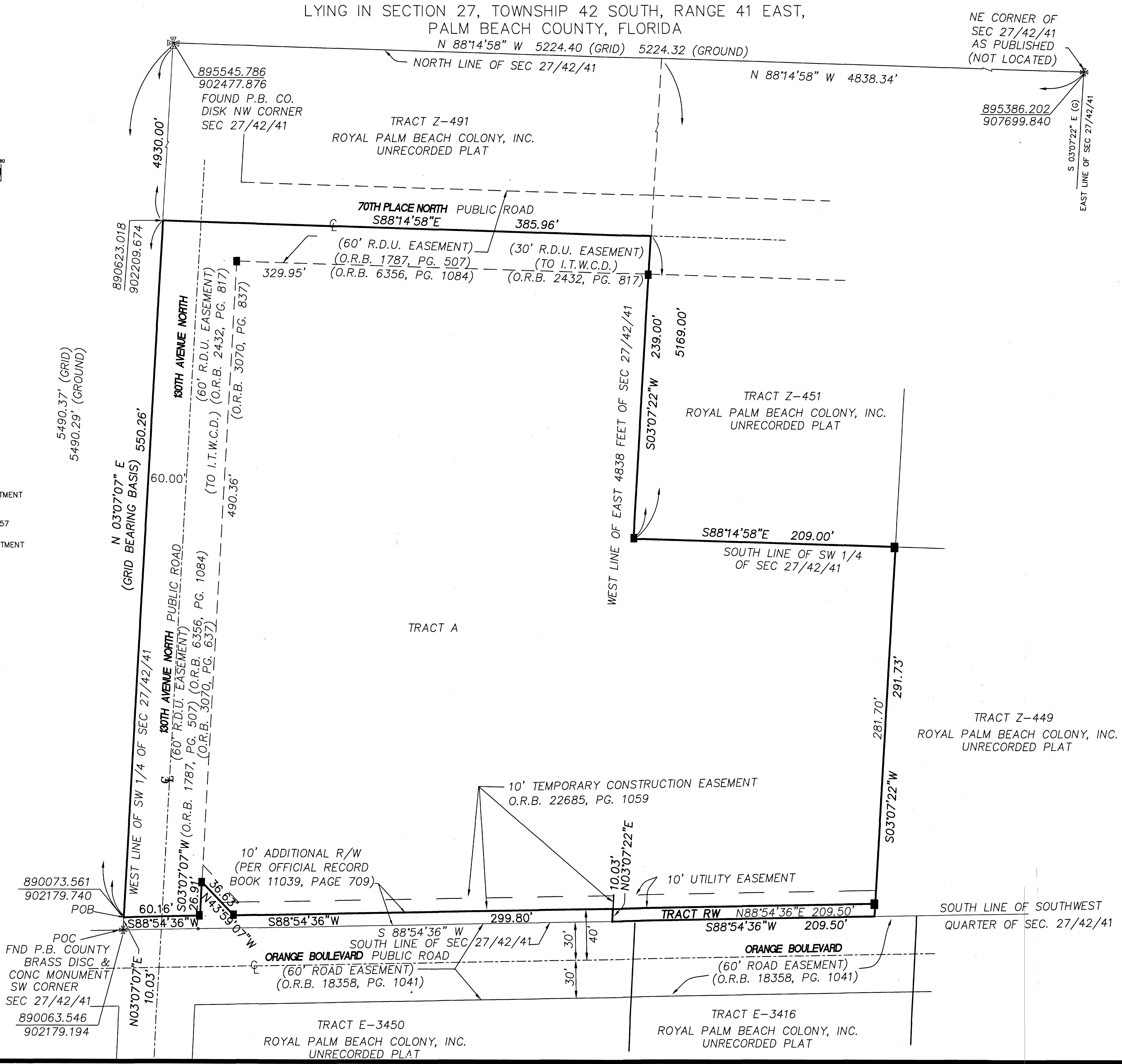
41

SHEET 2 OF 2



COORDINATES, BEARINGS & DISTANCES
COORDINATES SHOWN HEREON ARE GRID DATUM=NAD 83/90 ADJUSTMENT
1983 STATE PLANE, TRANSVERSE MERCATOR SYSTEM, EAST ZONE
LINEAR UNIT=US SURVEY FEET
ALL DISTANCES ARE GROUND SCALE FACTOR 1.00001457
GROUND DISTANCE X SCALE FACTOR=GRID DISTANCE
BEARINGS SHOWN HEREON ARE GRID DATUM NAD 83/90 ADJUSTMENT

LEGEND
■ Indicates Set Permanent Reference Monument
4" x 4" x 24" Concrete Monument, PRM LB#6936
P.O.B. Indicates Point Of Beginning
P.O.C. Indicates Point Of Commencing
P.B. Indicates Plat Book
O.R.B. Indicates Official Record Book
P.C. Indicates Page
FND. Indicates Found
R.O.W. Indicates Right Of Way
R.D.U. Indicates Road, Utility & Drainage



THIS INSTRUMENT WAS PREPARED BY
RICHARD N. DEAN, P.S.M. #4406
IN THE OFFICE OF DEAN SURVEYING &
MAPPING, INC., LB#6936
4201 WESTGATE AVENUE, SUITE A3,
WEST PALM BEACH, FL. 33409

Dean Surveying and Mapping, Inc.
"The Measuring Line Shall Go Forth" Jeremiah 31:39
4201 Westgate Avenue
Suite A3
West Palm Beach, Florida 33409
Tel: (561) 825-8748 Fax: (561) 826-4558

FIELD:	DATE: 08-31-23
DRAWN: M.R.	SCALE: 1" = 40'
SHEET: 2 of 2	JOB No.: 014-1105-PW